

# The Commonwealth Quarterly

News from around the circuit.

Spring 2018



**Commonwealth  
Electric Company**  
of the midwest

## INSIDE THIS ISSUE

Appointment of Vice  
Presidents

Congratulations  
Gary Demmel &  
Chuck Fintel

New Staff Members -  
Lincoln Branch

Dexcom  
Manufacturing  
Facility - Mesa, AZ

Core Construction

Tucson Branch

Central Nebraska -  
Estimating

Gothenburg Hospital

Internal Awards

Hy-Vee Food Store  
LED Retrofit Upgrade

## Appointment of Vice Presidents

**David Firestone - COO**

CECM's Board of Directors is pleased to announce the appointments of Jake Gable and Chris Gall to Vice President.

Jake has been with CECM for ten years. Jake's family has worked for four decades and he is part of the fourth generation to work here. Jake started in Omaha and has since moved to Columbus, NE to develop and run our central Nebraska operations. Jake oversees the Columbus, Grand Island and Kearney offices.

Jake currently is on the greater Nebraska Labor Management Committee, the greater Nebraska JATC Apprenticeship Committee, the Greater Nebraska JATC Apprenticeship Trust and the Board of Directors for the Columbus Chamber of Commerce.

Chris has been with Commonwealth since 1993. He started as a delivery driver in the Omaha warehouse. Chris worked his way up through the company where he took on electrical estimating and project management before starting the Commonwealth low voltage group in 2000. This group has grown to become responsible for approximately 10% of the company's total revenue each year.

Chris has been running projects nationwide for several customers over the last few years. He is a member of the Low Voltage Labor Management Committee for Local 22 and has been a Registered Communication Distribution Designer for BICSI since 2000.

Please join me in congratulating both Jake and Chris on their promotions.



Jake Gable



Chris Gall

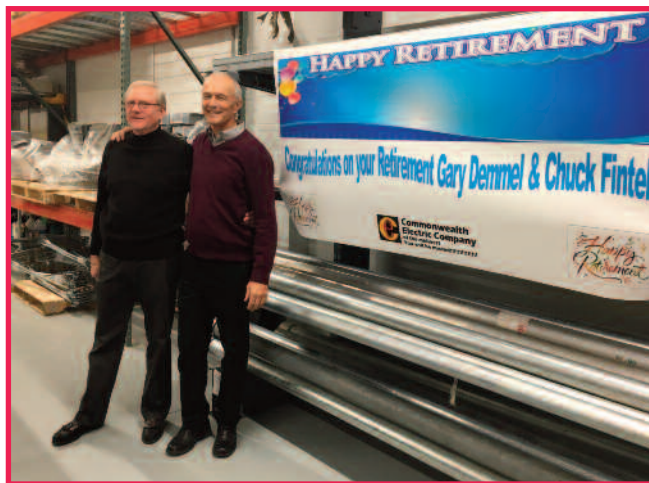
## Congratulations Gary Demmel & Chuck Fintel

**Neil Davidson** - Branch Manager / Vice President

After many years of hard work at Commonwealth Electric, Gary and Chuck decided to retire. Although Gary will still be working part-time, he hasn't quite thrown in the towel yet!

Chuck worked over 16 years for Commonwealth as a Project Manager. He managed several large projects working with OPPD, MUD, Hawkins and several other contractors. Chuck's positive and calm demeanor will be missed around the office. We wish Chuck the best in his next phase of life. Enjoy spending time with your family and hopefully more time fishing!

Gary gave over 30 years of service to Commonwealth Electric Company. He worked for the "Old Company" and came back in 1988 and built the Omaha Branch into a very successful branch for Commonwealth. He ran many projects over the years with Kellogg, First National Bank, Henry Doorly Zoo, MidAmerica Energy and many, many more. Gary also grew Commonwealth out to other locations in Columbus and Kearney. Gary will continue to do marketing part-time for us. Thank you for your kindness, friendship and guidance over the years. Although we'll still be seeing you around, we hope you enjoy spending more time with family, taking trips, golfing and enjoying the lake.

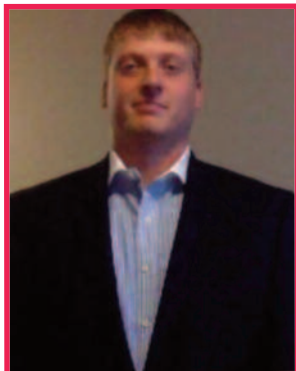


## New Staff Members – Lincoln Branch

**Mike King** - Vice President

It is with great pleasure I introduce our new staff members joining the Lincoln Branch. Angie Kelly will assume the position of Service Coordinator assisting primarily Matt Briggs, our senior service department manager and Alan Pendleton. Emily Schamber will be assuming the A/P position and various additional tasks as time allows. Emily has 16 years' experience in the electrical contracting business.

Adam Schlotthauer has recently joined us as an electrical engineering intern primarily working with Josh Muench. Adam is working at Commonwealth on a part-time basis and attending the University of Nebraska-Lincoln where he is scheduled to graduate in May of 2019. Jacob Dowler agreed to join us as an assistant automation engineer primarily assisting Scott Ragland, our automation and controls manager. Jacob is scheduled to graduate from the University of Nebraska-Lincoln in December of 2018. With the addition of these employees, the Lincoln Branch has a great staff assembled and we are looking forward to a highly productive 2018.



Jacob Dowler



Lincoln Branch Staff  
Left to right: Angie Kelly, Adam Schlotthauer,  
Emily Schamber

---

# Dexcom Manufacturing Facility – Mesa, Arizona

---

**Joe Wall** - Director of Business Development

CECM Phoenix has recently secured the award for Dexcom Manufacturing Facility – Tenant Improvements. The project is in Mesa, Arizona and will encompass the renovation and remodel of floors one and two, within building one.

Our contract is with Skanska USA Building, who is the general contractor for the project. This is the second contract with Skanska this past year, the first being the Arizona Center, which is still in progress. Both projects are well over the 1 million dollar mark.

Dexcom is a multi-million-dollar manufacturing facility producing medical implant tracking devices. The renovation will include a data call center with multiple offices, mechanical mezzanine, conference rooms, and a break area with rest rooms. The main scope of work is to install power and state of the art lighting distribution throughout a 50k sq. ft. shell space. There will be additional T.I. build out in the next phase to come.

The project started this past September 2017 and the completion date is set for March of 2018. The original contract amount was \$1,115,000.00. To date there has been over \$285,000.00 in additional change orders, bringing the new total to approx. \$1,400,000.00.

The project manager for CECM is Caleb Graham and the project estimator is Jeff Campbell. Our field operations manager is Jason Turner and he has selected Mark Clarke as our field foreman.



## Core Construction

---

**Cody Hoobler** - Project Manager

CECM Tucson is working with CORE Construction on a two-million-dollar contract to provide electrical and fire alarm systems for a new K-8 school in Sahuarita, AZ. Started in the fall of 2017, this project has an aggressive schedule with anticipated completion before school starts in August 2018.

The school includes six new buildings with a total of 78,000 square feet of interior space. There is also a shared use park with a football field, basketball courts, a softball field and a baseball field. We have already completed nearly 3 miles of trenching and excavating for electrical, communications, site lighting, sports field lighting and extending to future utility locations. CORE Construction has introduced us to using Bluebeam software and it has been a great tool on this project. Our foreman Brandon Farnham has done an excellent job supervising such a large project and staying on top of all details and changes.



## Tucson Branch

**Terri Beilman** - Office Manager

The Tucson Branch has grown its service customer base over the past year through teamwork with everyone focused on the same goal, meeting our customer's needs and expectations. One of the fastest growing vertical markets have been schools, K-12 was the largest growth for 2017. In addition to becoming a preferred electrical contractor for Tucson Unified, Catalina Foothills, Sunnyside, Marana, and Amphitheater school districts in 2017, we completed summer projects, lighting upgrades, new Amphitheater Alt High School, new Welding Shop Marana to mention a few. Tucson is now poised to continue into 2018 in this market with a sound record of a job well done. Tucson's service department is now venturing into the higher education market at the local university.

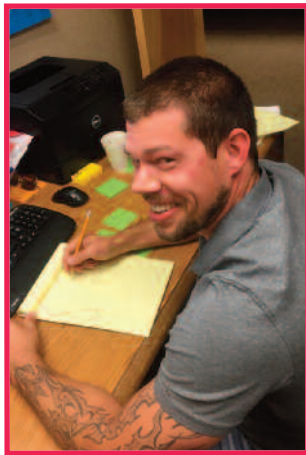
None of this sustainable growth would be possible without each person on our team taking ownership and working each day as if the company's success depends on each of them individually. To recognize some of the team, Terri Beilman working from the beginning answering the calls to making the final billing. Kyle Olsen our latest addition to the team as Assistant Service Manager, manages the service calls from the beginning of the order to organizing material, manpower, and customers.

We also have three outstanding journeyman that are the face of the customers. They meet the customer's needs and leave the customers with a quality experience that has established loyal customers and a good base to grow on. They are Will Niesen - Journeyman and first responder for the Service Department, Phil Blair - service and small projects and Michael Davison - small projects.

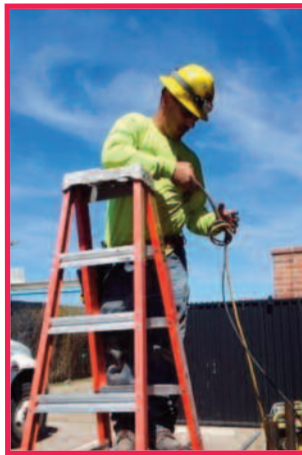
Thank you to all who have worked hard to make CECM what it is today.



Michael Davison



Kyle Olsen



Phil Blair

## Central Nebraska – Estimating

**Dusty Romshek** - Columbus Branch

Jacob Wilczynski began working as an estimator at the Columbus branch in June of 2017. He has been a great addition to our team here in Columbus and has proven to be a valuable asset thus far. Jacob was brought in as an estimator to assist not only the Columbus branch, but all of central Nebraska as well. Between the Columbus, Grand Island, and Kearney locations, there has been no shortage of work to keep him busy (sometimes we might keep him a little too busy for his liking!). Jacob has caught on quickly to our estimating system and has been able to hit the ground running, which is exactly what we needed here in central Nebraska.

Jacob actually began working with Commonwealth as a CW in May of 2016. He worked primarily at the Cargill Meats expansion project in Columbus. Prior to that, Jacob attended Northeast Community College in Norfolk where he received two associate's degrees. A degree in Electrical Construction and Control in May of 2015 and Electro/Mechanical Technology in May of 2016. Jacob had expressed his interest in being part of our estimating/project management team when he initially began working for Commonwealth. This, along with his classroom and field experience, made him a good fit for this position. Primarily, Jacob has been focusing on estimating commercial projects. Moving forward, we plan to have him take a more active role in estimating industrial projects as well.

Outside of work, Jacob spends most of his free time being active in a variety of sports, such as golf, snowboarding, basketball, weightlifting, sand volleyball, and league softball. For those of you who have not met him yet, please welcome Jacob Wilczynski to Commonwealth Electric Company of the Midwest.



Jacob Wilczynski

# Internal Awards

**Ruben Bera** - Corporate Safety Director

Each year Commonwealth receives many safety awards from various agencies including our insurance company. All the awards are appreciated. They reflect our commitment to keeping everyone safe. We should proudly display our awards. They demonstrate to customers and employees that safety is our top priority.

Outside awards are nice, but what about internal awards? In 2017, four of our locations completed the year without a recordable accident. In recognition of this achievement, I presented each location with a plaque for their efforts. The plaques read in part:

**“Your commitment to safety is a testimony of our success.”**

This statement is not just for these four locations. The statement reflects everyone who works at Commonwealth, including the field, the office and the warehouse. Everyone plays an important part in keeping and promoting our safety. As I look back on previous years and compare numbers, each year we seem to outdo the previous year. In the safety field there is a saying, **“If we take care of our people, the numbers will take care of themselves”**.

Join me in congratulating the following locations and a big congratulation to all of us working at Commonwealth Electric. 2017 - Zero recordable accidents: Des Moines, Kearney, Phoenix, including the Expo Division, Tucson



Des Moines



Expo



Kearney



Phoenix



Tucson

**Commonwealth Electric Safety, we promote it, sell it and are proud of it!**

## Gothenburg Hospital

**Jacob Svoboda** - Project Manager

Commonwealth Electric has been working at the Gothenburg Hospital for the last 4 years. We started by working in the OR and Surgery areas, moved on to changing the electrical service and building a new electric room with a new generator. We have since added a new patient wing to the existing hospital, remodeled new offices and an MRI.

Our latest addition is a wellness area including a gym and pool that has brought a partnership with the YMCA to the hospital. This will be a great addition to the hospital and the Gothenburg community. The project is in its final push and is scheduled to be completed in June.

Lincoln Low-Volt Group has been doing all the communication cabling. Anthony Brown has been our onsite foreman throughout this project and has done a great job coordinating with the engineer, owner and Sampson Construction.



## Hy-Vee Food Store LED Retrofit Upgrade

**Andy Sueper** - Service Manager

Commonwealth Electric Company of the Midwest, Columbus branch recently completed a project for Hy-Vee Food Store in Columbus, NE, updating their facility to LED retrofit lamps. Hy-Vee, which is an employee-owned supermarket, opened its doors to a new facility in 2005. Since then many changes have been made in the lighting market. One such change is the possibility of re-lamping a facility to LED without having to repurchase an entirely new fixture.

Hy-Vee Food Store was due to re-lamp their store at the beginning of 2018. With most of Hy-Vee's stores, re-lamping is done every 2 years. Commonwealth proposed an LED retrofit instead of re-lamping the entire store with fluorescent lamps. We wanted to show Hy-Vee that using the LED retrofit would result in less maintenance costs by eliminating the ballasts and the store would have greater energy efficiency. Hy-Vee could see the importance of bringing their facility to a more energy efficient standard, but to change to LED, Hy-Vee wanted an estimated of the LED lamps rather than the traditional fluorescent lamp. To accomplish this, Commonwealth Electric consulted with a local wholesale supplier to form an analysis of Hy-Vee's current electrical output and estimated savings by switching to LED lighting. After a review of the facility's current lighting system energy consumption, a report was created identifying the potential savings by the hours of operation, the number of fixtures, and the KW that would be reduced by LED lamps instead of their current fluorescent lighting. This report showed that this payback with rebates that were offered by the local utility company could be done in less than a year.

With the potential payback, Hy-Vee assigned Commonwealth Electric the task of re-lamping the entire store lighting to LED retrofit lamps. Because Hy-Vee is a supermarket that is open 24 hours a day and 364 days a year, this project would be more complex than a traditional lighting project. Careful consideration and planning had to be made to not only complete the job on time and on budget, but also to prevent obstacles that could potentially interrupt the operation of the store, disrupting customer flow through the aisles, and department operations.

Hy-Vee and Commonwealth's proactive approach of not only finding alternate ways of energy efficiency for their operation, reducing maintenance costs, and reducing the companies carbon footprint has ultimately resulted in a relationship between the two companies that will continue to grow and prosper with many years to come.