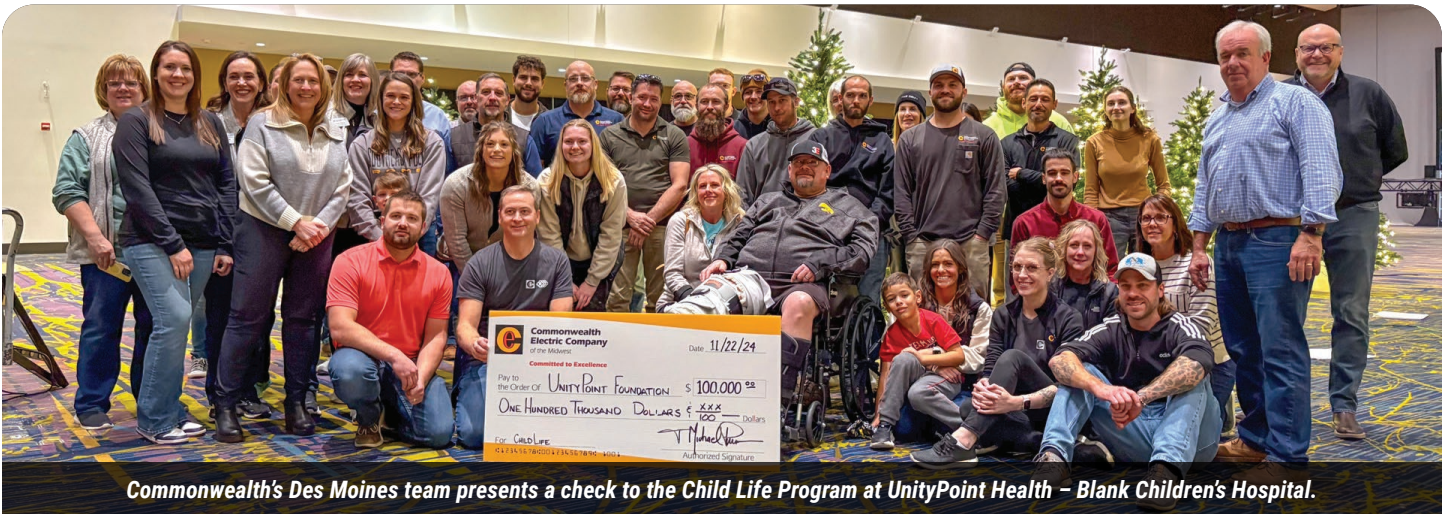




# The Commonwealth Quarterly

News from around the circuit | Winter 2024-2025



Commonwealth's Des Moines team presents a check to the Child Life Program at UnityPoint Health – Blank Children's Hospital.

## INSIDE THIS ISSUE:

- **Lincoln Teams Complete Major Infrastructure Projects at SCC** (Pg. 3)
- **Omaha Team Upgrades Papillion Creek WRRF** (Pg. 4)
- **Commonwealth Leads DSM Airport Terminal Expansion** (Pg. 5)
- **Commonwealth Upgrades Historic Arizona Government Buildings** (Pg. 6)
- **Tucson Nears Completion of SkyWest Maintenance Hangar Project** (Pg. 7)
- **Safety Updates** (Pg. 10)
- **VDC/Prefabrication Updates** (Pg. 11)

...AND MORE!

## Commonwealth Cares: Energizing Communities for a Brighter Tomorrow

This winter, Commonwealth unveiled its new initiative for charitable giving: Commonwealth Cares. Commonwealth Cares formalizes all aspects of our philanthropic giving under the banner "Energizing Communities for a Brighter Tomorrow." It builds upon the local efforts that have been in place across our locations and establishes a framework for more significant, strategic charitable initiatives.

This approach fosters a sense of ownership and community within Commonwealth, encouraging employees to actively nominate and choose charities that are important to them. Representatives from each of Commonwealth's locations play a pivotal role in overseeing the decision-making process, promoting a diverse range of perspectives and expertise. This inclusive process also allows employees to use their skills, volunteer their time, and have a say in the philanthropic direction of their company.

Commonwealth's view on philanthropy goes beyond local giving and volunteer

"We are incredibly proud to launch the Commonwealth Cares initiative, which embodies our commitment to making a positive impact in the communities we serve."

– **T Michael Price,**  
Commonwealth President/CEO

efforts. It's also about significantly illuminating lives and serving the communities we operate in. We are committed not only to delivering top-tier electrical, low voltage, and exposition services, but also to actively contributing to the betterment of our industry, our customers, and the communities we serve. Through our company's new Commonwealth Cares initiative, we aim to be a force for positive change.

Through Commonwealth Cares, our teams came together to contribute to the causes that resonated with them, underscoring our

*Continued on next page*

# Commonwealth Cares: Energizing Communities for a Brighter Tomorrow

*Continued from previous page*

dedication to community well-being. Commonwealth donated a combined total of \$275,000 to local charities and foundations in the communities in which we operate.

The first of these donations—\$100,000—was made to the Child Life Program at UnityPoint Health – Blank Children’s Hospital in Des Moines, IA. This program is entirely funded by donations and provides essential support to children and their families during medical procedures. Our 40-year relationship with UnityPoint Health, and participation in the annual Festival of Trees and Lights fundraisers made this contribution especially meaningful. Project Managers Kate Kriegel and Ashley Huinker nominated this program due to their personal experiences with the organization.

Commonwealth also donated \$25,000 to the Nebraska and Iowa chapter of Breakthrough T1D (formerly the Juvenile Diabetes Research Foundation) to support its mission of advancing life-changing breakthroughs for curing, preventing, and treating type 1 diabetes (T1D) and its complications. Project Manager David Vander Horst nominated Breakthrough T1D because of his wife’s 42-year journey with T1D and the organization’s impactful research.

In Salt Lake City, UT, our team at Rydalch Electric, Inc. had a similar experience with the organization. Project Engineer Jacob Hancock, who is personally impacted by T1D, nominated the Mountain West chapter of Breakthrough T1D, recognizing the invaluable support he has received from the organization. Thanks to his nomination, a \$25,000 donation was made.

Another donation made this year through Commonwealth Cares was that of \$75,000 to the Duncan Aviation Family Trust in Lincoln, NE. Founded in 2004, this trust grants over \$500,000 each year to community centers, after-school programs, United



**The Des Moines (L) and Rydalch Electric, Inc. (R) teams present checks to Breakthrough T1D.**



**The Lincoln team presents a check to the Duncan Aviation Family Trust.**



**Commonwealth's Lincoln and Omaha teams present a check to the Children's Nebraska Foundation.**

Way initiatives, scholarships, and more. Commonwealth has fostered a long-standing relationship with Duncan Aviation for over 35 years. This collaboration has fostered strong connections between Commonwealth’s electrical team and Duncan Aviation’s facilities maintenance staff and leaders, which has been key to their mutual success.

Lastly, our company donated \$50,000 to the Children’s Nebraska Foundation in Omaha, NE, to support its mission of providing premier pediatric services and programs. These funds bring comfort and holiday magic to children and their families

during their stay at the hospital. This gesture was especially meaningful to Estimator Nick Manes, whose son, Giovanni, receives treatment for Neurofibromatosis Type I at Children’s Nebraska.

Here at Commonwealth, the spirit of giving is deeply ingrained in our culture. Through our Commonwealth Cares initiative, we are committed to making a positive impact on the communities we serve. We take great pride in the positive difference we’re making in the communities we serve, and we look forward to continuing our efforts to ensure a brighter tomorrow for all.

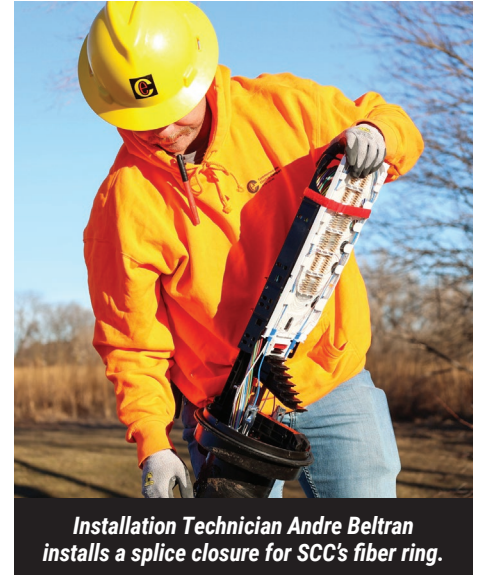
# FEATURED PROJECTS

## Lincoln Teams Complete Major Infrastructure Projects at Southeast Community College

**Jacob Starkey** – Low Voltage General Foreman | Lincoln, NE, **Todd Starkey** – Project Manager | Lincoln, NE, and **Roger Rezac** – Service Manager | Lincoln, NE



L to R: Juan Aldana, Jacob Starkey, and Andre Beltran



Installation Technician Andre Beltran installs a splice closure for SCC's fiber ring.



Cabling is displayed inside a telecom room on SCC's campus.

Commonwealth Electric Company of the Midwest's (CECM) team in Lincoln, NE, has successfully completed two significant projects at Southeast Community College's (SCC) Lincoln Campus.

The first of these projects was the installation of cabling for SCC's new Sandhills Global Technology Center for STEM Education: a state-of-the-art facility designed to address the skilled workforce gap in southeast Nebraska. Spanning 138,000 square feet, the building houses programs in Biotechnology, Design Drafting, Information Technology, and Electronic Systems.



The new Sandhills Global Technology Center for STEM Education

Commonwealth's Low Voltage team installed all horizontal and backbone cabling for the project, including 1,400 Cat6 connection points for network, phone, security, wireless, AV equipment, and scheduling panels. The crew also installed vertical and horizontal ladder racks in four telecom rooms, set up multiple two-post racks, and terminated a 24-strand fiber to each equipment closet, setting the groundwork for the second portion of work.

Following the successful installation of the STEM building's cabling, the second project encompassed the completion of the campus's existing campus-wide fiber ring, which links the data closets in each of SCC's buildings to its main data center. This portion was a collaboration between Commonwealth's Lincoln Low Voltage team and Electrical Service Department. The team created a new pathway for roughly 6,500 feet of fiber optic cable. The fiber was then installed and spliced onto the existing 144-strand fiber ring, connecting SCC's maintenance building, the new STEM building, and the new welding building.

This collaboration was a testament to the expertise and dedication of the CECM team in providing top-notch electrical and communication solutions. CECM greatly values its relationship with Southeast Community College and is proud to have contributed to the enhancement of the college's infrastructure.

## CECM Omaha Team Upgrades Papillion Creek WRRF

*Noah Thornton – Senior Project Manager | Omaha, NE*

Commonwealth Electric Company of the Midwest's (CECM) team in Omaha, NE, is making significant progress on two projects at the Papillion Creek Water Resource Recovery Facility (WRRF). This wastewater plant is designed to intake all of the City of Omaha's waste and separate it into three valuable resources: gas, water, and solids.

The first project the CECM team is completing aims to upgrade the facility's digesters, which transform waste into valuable resources. These digesters will extract methane gas from the waste, which will then be treated and used as an energy source to power the plant through four medium voltage generators, which the CECM team is installing in the second project. Alternatively, the methane can be sold to utility companies across the nation for use as fuel.

In addition to gas extraction, the plant will also extract and treat water, removing waste products so that the water can be safely returned to the river. Once treated to meet U.S. regulations, this water can then be reused.

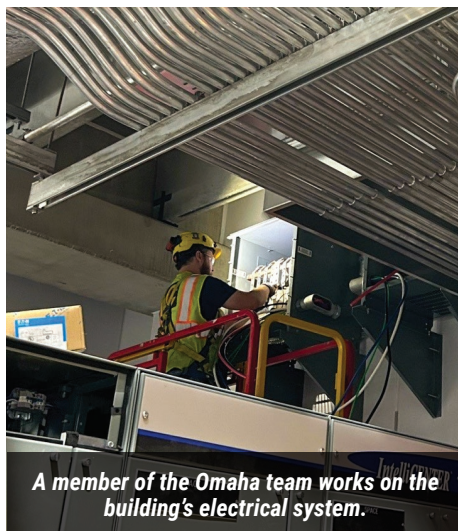
The solids extracted from the waste will also undergo a recycling and treatment process, after which they will be sold as compost for use in fields, gardens, and other applications, contributing to the sustainability and health of the surrounding community and the environment.

Throughout these projects, the Omaha team is installing and commissioning the entire electrical system, including power, lighting, and control systems. CECM is providing a turnkey electrical system by installing all raceways, wire, lighting, process control, and commissioning the system in partnership with the owner, engineer, architect, general contractor, and other subcontractors.

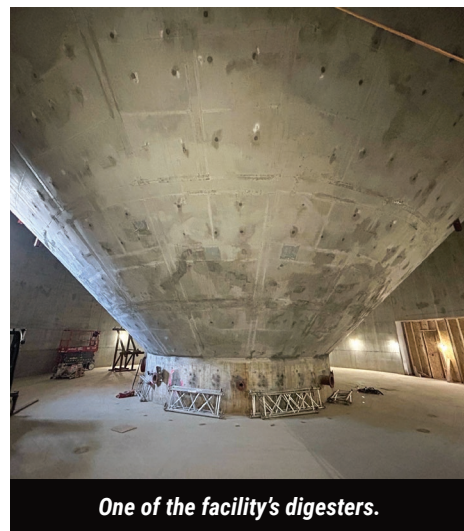
Already two years into construction, the upgrade to the Papillion Creek WRRF's digesters is expected to be



*The Commonwealth team installed the WRRF's conduit, as seen above.*



*A member of the Omaha team works on the building's electrical system.*



*One of the facility's digesters.*

completed by the end of 2025. The second project, which involves the reuse of methane generated by the plant, is expected to be completed by the end of 2027.

The newly upgraded Papillion Creek WRRF will continue to provide fresh, recycled, and treated resources that can be used again and again. Our team is excited to see these projects come to fruition and is proud to contribute to the health and sustainability of Omaha and its surrounding communities.



*The WRRF, as seen from outside.*

## Des Moines Service Department Completes New Practice Fields

*Jenae Frisch – Project Coordinator | Des Moines, IA*

Commonwealth Electric Company of the Midwest's Des Moines, IA, Service Team is thrilled to announce the completion of new track and field practice fields at Lincoln High School and East High School, both part of the Des Moines Public School district. This significant project, with



*Lincoln High School's new practice field.*

a combined budget of half a million dollars, represents a substantial investment in the future of our students and the local community.

The project involved the construction of new turf practice fields at both schools. The scope of work included the installation of power and low voltage pathways, as well as the addition of parking lot and flagpole lights. At Lincoln High School, we also provided Musco Lights to enhance the field's usability at night.

The project at East High School was completed in three months, while the Lincoln High School project took six months to finish. In the field, the project was led by Service Journeyman Logan Foetisch, who was supported by Service Manager Tom Washington and Service Coordinator Jenae Frisch in the

office. Their teamwork and dedication were instrumental in the successful completion of these projects.

Throughout the project, our team fostered a positive working relationship with Turner, the General Contractor. This collaboration was crucial in ensuring the smooth execution of the project. The new practice fields will benefit the students at these schools, providing them with new facilities for their athletic training. While the fields are currently being used for practices, there is hope that they will host events in the future, further enhancing their value to the community.

The Des Moines Service Team is proud of the work done and looks forward to seeing the positive impact these new facilities will have on the students and the community.

## Commonwealth Leads Des Moines International Airport Terminal Expansion

*Dylan Berkey – Project Manager | Des Moines, IA*



*Phase 1 of the new DSM airport terminal.*



*The Des Moines crew installs underground conduit.*

Commonwealth Electric Company of the Midwest's Des Moines, IA, team has embarked on an ambitious project to expand the terminal at Des Moines International Airport. As the prime electrical contractor, Commonwealth is responsible for all underground, power, temporary power, and lighting for Phase 1A of the new terminal. Additionally, the Des Moines Limited Energy team will handle the installation of low voltage cabling, fire alarm, and security systems.

The new terminal aims to enhance the airport experience with more streamlined security processing, improved dining and concession opportunities, and an upgraded baggage claim system to accommodate the growing number of travelers. The nearly \$40 million terminal addition is scheduled for

completion in February 2028, with more phases to follow.

The electrical scope of the project is being managed by Project Manager Andrew Lawrance, with Site Superintendent Chris Kesterson leading the field operations. General Foremen Willie Wilson, Tracy Simmons, and Hunter Davis are also key players in the project. The Limited Energy team is headed by Project Manager Matt Sarcone and Field Foreman Lindsay Leslie, with Senior VDC Designer Nick Friesen overseeing the project's Virtual Design and Construction (VDC).

The General Contractor for the project is Turner Construction Company and Joint Venture partner The Weitz Company.

## Commonwealth Electric Upgrades Historic Arizona Government Buildings

*Rich Scheuermann – Service Manager | Phoenix, AZ*

The Commonwealth Electric Company of the Midwest (CECM) team in Phoenix, AZ, is working on a \$2 million electrical contract with Sun Eagle Corporation for the Arizona Department of Administration: Capital Projects – House and Senate Electrical Upgrade.

The House of Representatives Building and the Senate Building, both opened in 1960, have recently experienced issues that have led to building shutdowns. The primary goal of this project is to prevent these shutdowns by installing new plumbing and electrical systems. Due to the age and nature of the buildings, this project has encountered unique challenges, such as outdated plumbing systems and unlabeled circuits.

Another challenge was the building's old brick foundations; the CECM team

had to recess panelboard cans into the brick structure, which was not an easy task. Furthermore, the coordination of work throughout government sessions, tight security, and the presence of protesters has added to the project's complexity.

General Foreman Brad Voris was selected for this project because of his extensive electrical knowledge, experience, and diverse skill set. He and his team of electricians have installed a new 4,000-amp SES and distribution switchboards, converted motor control centers to distribution boards, replaced all feeder conductors in existing conduits, replaced panelboard interiors in existing cans, and reconnected all existing branch circuits to the new panel interiors.

Brad and his team have demonstrated innovative thinking to accomplish this



*Phoenix employees update electrical systems.*

task. Utilizing existing conduits and panel cans from a 1960s building has presented many obstacles, but they have worked through them safely and efficiently to complete this project within the schedule and budget.

## Greater Nebraska Team Awarded Hospital Project

*Jeremy Braun – Project Manager | Columbus, NE*

Commonwealth Electric Company of the Midwest's Greater Nebraska team has been awarded the Butler County Health Hospital Project Phases 3 and 4 in David City, NE. This project includes both an addition and renovation, featuring a 16,000-square-foot expansion on the northeast side of the hospital facility and a 6,000-square-foot renovation of the existing emergency department.

The project addition involves an updated emergency services department, an ambulance bay, a new main entrance to the facility, administration office spaces, and a new generator and Automatic Transfer Switch (ATS) package. These updates aim to improve

the hospital's capacity to provide emergency care and streamline patient access.

The project renovations include upgrading the existing emergency department into new exam rooms, nurse call systems, and access controls, which are intended to enhance patient comfort and care efficiency. Replacing an old 500-kW generator and transfer switch with a new 1,500-kW setup while maintaining hospital operations is a challenging aspect of this project, highlighting its complexity.

Commonwealth is working with General Contractor JE Dunn on this project, leveraging their previous collaboration on several hospital projects. This partnership brings



*A rendering of Butler County Health.*



*Phase 3 of the renovation.*

experience and expertise that will contribute to the project's successful completion for the community's benefit.

# Tucson Team Nears Completion of SkyWest Maintenance Hangar Project

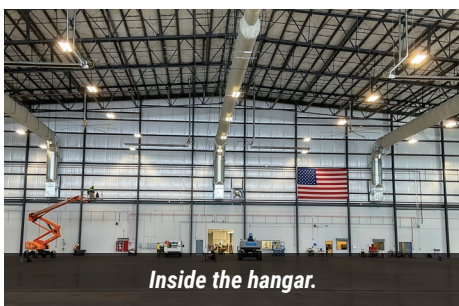
Steve Sertich – Project Manager | Tucson, AZ



*Inside the new SkyWest Maintenance Hangar Facility.*



*Commonwealth's Tucson team.*



*Inside the hangar.*

Commonwealth Electric Company of the Midwest's (CECM) team in Tucson, Arizona, is working on completing a \$3.75 million electrical contract with Big-D Construction Southwest for SkyWest Airlines. The new SkyWest Maintenance Hangar Facility, located on Tucson International Airport property, consists of a 32,700-square-foot office and parts area, a 30,000-square-foot shop area, and a 100,000-square-foot hangar area.

The airport taxiway, with new airport lighting, feeds into a large apron area with 40-foot LED pole lights to house large airplanes. The hangar itself, which reaches 70 feet above the floor, has three large sliding bay doors that can fully open to house and service up to six large aircraft. The office and parts area serves both SkyWest office personnel and parts supplies. The new shop area is equipped with various machines, equipment, and power receptacles, including many overhead power cord drops, to support interior repairs, parts painting, and other functions.

The project is powered by a 3,000-amp, 480-volt Service Entrance Section (SES), which includes a distribution switchboard, panelboards, and step-down transformers throughout the building. It also

features several emergency inverters, an Uninterruptible Power Supply (UPS), a natural gas generator, cable trays, and special systems rough-ins. The structured cabling system for the entire facility was a separate contract with the owner and was managed by Project Manager Freddy Carlisle and Foreman Rudy Martinez, along with their low-voltage crew. The building also contains a complete fire alarm system, a hangar infrared (IR) detection system, and a Distributed Antenna System (DAS) to meet building code coverages.

We would like to recognize and express our appreciation to General Foreman Mat Merriman, Foreman Collin Deputy, and a dedicated field crew of 28 electricians at peak size. This hardworking team has been putting in 58 hours per week since the end of October, overcoming steel building and other delays, to complete the project on schedule with a March 2025 completion date.



*The hangar, as seen from outside.*

# COMPANY EVENTS

## Phoenix Hosts Employee Appreciation Events

**Jamie Runnion** – Office Manager | Phoenix, AZ



*Employees enjoy a meal at a Field Appreciation Event.*

This past December, Commonwealth's Phoenix, AZ, team gathered to celebrate a field appreciation event and their annual Holiday party.

Throughout these events, employees enjoyed delicious food, tried their luck in a raffle, spent quality time together, and recognized the crew in the field and all their hard work throughout the year.

A big thank you to all who made these events possible, as well as to everyone who joined in celebrating.



*Phoenix employees attend the annual Holiday party.*

## Des Moines Team Sponsors 41st Annual Festival of Trees and Lights

**Ashley Huinker** – Project Manager | Des Moines, IA



*The Des Moines team attends the Festival of Trees and Lights.*

For the past 11 years, Commonwealth Electric Company of the Midwest in Des Moines, IA, has been a proud sponsor of the annual Blank Children's Hospital's Festival of Trees and Lights. This event is Blank Children's Hospital's largest fundraiser and has become a central Iowa tradition to commence the holiday season.

Commonwealth has maintained a robust partnership with UnityPoint Health and Blank Children's Hospital for over 30 years. We were honored to participate in this event once again. Over 50 Commonwealth employees generously contributed their time and effort during the Thanksgiving holiday weekend to assist with unloading crates, setting up holiday decorations, and assembling more than 80 Christmas trees. At the conclusion of the Festival, employee volunteers returned to assist with dismantling, repacking, and loading the trees for delivery to their new homes for the holidays.

This year's Festival of Trees and Lights raised over one million dollars to support the Child Life Program and advocacy and outreach programs at Blank Children's Hospital. Thousands of families from across the state attended, enjoying the beautifully decorated trees, the engaging children's area, and the live entertainment.



*Service Manager Jeff Hutchison unbags a Christmas tree.*



*Administrative Assistant Liz Duffy sets up and fluffs a tree.*

We extend our heartfelt gratitude to all the Commonwealth employees and their families who volunteered for this significant and worthwhile event. We are delighted to have been part of this event once again and look forward to continuing our service to UnityPoint Health and Blank Children's Hospital for many years to come.



## Unifying Training Efforts: A Year of Growth and Collaboration

**Landon Braithwait** – Field Operations Manager | Columbus, NE

A little over a year ago, field operations managers across all Commonwealth locations, with the help of Greater Nebraska Vice President Jake Gable, began biweekly meetings to leverage each location’s field operations strengths. The primary goal was to ensure consistent training for foremen. After several meetings and support from branch managers, a comprehensive four-quarter training plan was established.

Q1’s training focused on Virtual Design and Construction (VDC), Building Information Modeling (BIM), and prefabrication, with Vice President/ Director of Engineering Eric Hoge, P.E., and VDC Manager J.T. Holmes teaching these topics.

In Q2, in collaboration with Momentum Labs, the training emphasized leadership skills for effective foremen.

Q3 focused on standardizing company policies and procedures, including



**Safety Manager Lucas Simpson leads a training session during Q4 of 2024.**

scheduling and daily logs.

In Q4, NFPA 70B and NFPA 70E maintenance and safety standards were introduced by Safety Manager Lucas Simpson, Safety Director Todd Longnecker, and Field Operations Manager Landon Braithwait, highlighting proper maintenance practices, hazard identification, risk assessment, and safe work practices.

These in-person training sessions received positive feedback, leading

to improved consistency in foremen training, enhanced leadership skills, standardized procedures, and a deeper understanding of maintenance and safety standards.

This collaboration illustrates the unified effort across Commonwealth locations towards education and development. The ongoing commitment to growth and collaboration is expected to drive the company’s further success and innovation.

## Greater Nebraska Team Presents to Students at the UNK MEP Systems Class

**Mitch Peabody** – Low Voltage Project Manager | Kearney, NE

In December, the Commonwealth Electric Company of the Midwest’s Greater Nebraska team visited the University of Nebraska at Kearney’s (UNK) Mechanical, Electrical, and Plumbing (MEP) Systems class to give a presentation on trade practices. During the presentation, Greater

Nebraska Vice President Jake Gable discussed subcontractor requirements and provided information about Commonwealth and its intern program.

Field Operations Manager Landon Braithwait and Project Manager Riley Fisher shared insights into managing manpower and coordinating with current job sites. They covered considerations during bid time, common practices for electricians, and the codes used in 2024.

Low Voltage Project Manager Mitch Peabody, a UNK graduate and former Commonwealth intern, described his experiences and the opportunities he

encountered at Commonwealth.

The Greater Nebraska team received numerous questions from the students, showcasing their interest and engagement. The students’ inquiries and participation highlighted the importance of maintaining relationships with future industry professionals.

Due to the interest and feedback of the students, the team plans to return next year at the request of Professor JD Stone. Commonwealth looks forward to continuing this partnership and fostering future project managers.

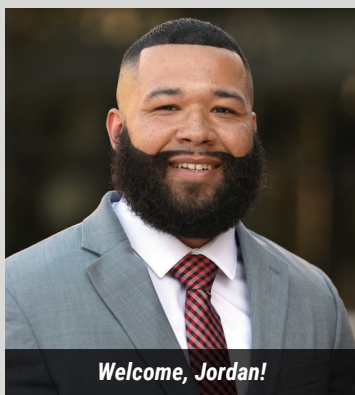


**Riley Fisher presents to the UNK MEP Systems class.**

# SAFETY UPDATES

## Commonwealth Welcomes New Member to the Safety Team

**Todd Longenecker** – Safety Director | Omaha, NE



*Welcome, Jordan!*

It's hard to believe that 2024 is in the books and we are well into 2025. Looking back, it was another great year for Commonwealth, especially in terms of the safety of our employees and our department.

We are excited to share that we've added a new member to our team: Jordan Nelson.

Jordan brings extensive safety experience across various trades and industries. Previously a high school football coach, he now manages safety and health at our Arizona locations.

In his free time, Jordan enjoys spending time with family, watching sports, and going to the gym.

Welcome to Commonwealth, Jordan!

## Des Moines Wins the 2024 Q4 Commonwealth Cup Award

**Todd Longenecker** – Safety Director | Omaha, NE



*L to R: Todd Longenecker, Chip Shull, Travis Powell, Nick Hansen.*

Congratulations to the winners of the 2024 Q4 Commonwealth Cup: our team in Des Moines, IA!

While already logging an incredible number of labor hours for the quarter, the Des Moines team knocked it out of the park with their safety performance. A big congratulations to the entire team for a fantastic finish to the year!



*L to R: Matt Sarcone, Todd Longenecker, Kay Mealey, David Vander Horst, Nick Hansen.*

Congratulations, too, to General Foreman Chip Shull and Foreman Kay Mealey, the two winners of the randomly drawn gift cards.

The Commonwealth Award of Safety Excellence ("The Commonwealth Cup") recognizes the Commonwealth location with the best safety record, both quarterly and annually.



**COMMITTED TO SAFETY**

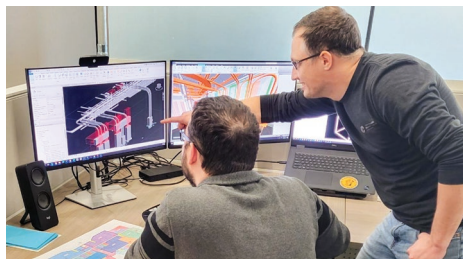
At Commonwealth, we are not only committed to excellence but also committed to providing a safe workplace for our employees.

# EMPLOYEE SPOTLIGHTS

## Meet Commonwealth's Virtual Design Construction Team

*J.T. Holmes – VDC Manager | Omaha, NE*

Did you know that Commonwealth has an internal Virtual Design Construction (VDC) department? VDC is currently located within the Central Engineering office in Omaha, NE, with two remote locations in Des Moines, IA, and Phoenix, AZ. The group has a dedicated VDC Prefab Manager who oversees the process of taking modeled components and building them out in Commonwealth's prefabrication locations.



**Shon Monaghan (L) and Stewart Bohrer (R).**

VDC is the process of utilizing technology to make the construction process more efficient. It enables companies to use highly accurate 3D models to create a digital twin of a project in advance, allowing the verification of constructability throughout the building process.

Many in the industry have heard of the term Building Information Modeling (BIM) and have used this term interchangeably with VDC. However, BIM is just a sub-process of the overarching VDC workflow; VDC also encompasses "old-school" processes of planning and coordinating.

VDC has worked on many types of projects throughout the company, including electrical construction, mission critical, industrial, government, institutional, and health industries.

### Get to know our VDC team!

#### Omaha, NE

Gerald (J.T.) Holmes – VDC Department Manager

Stewart Bohrer – VDC Prefab Manager

Colton Yeager – Sr. VDC Designer

Alex Valentine – VDC Designer III

Sheri Stone – VDC Designer III

Nick Crawford – VDC Designer I

Leslie Velasco – VDC Designer I

Shon Monaghan – VDC Designer I

Paul Godbersen – VDC Designer I

#### Des Moines, IA

Nick Friesen – Sr. VDC Designer

#### Phoenix, AZ

Justin (JT) Harrison – VDC Designer II

## Prefab Positives: Updates From Commonwealth's Prefabrication Projects

*Sarah DeWispelare – Engineering Services Coordinator | Omaha, NE*

The **Des Moines, IA**, prefab team has built two motor starter racks, which start a group of exhaust fans in a local mission critical project.

In **Greater Nebraska**, the Grand Island casino is installing a 2,200-pound chandelier that requires a custom support structure. Prefab put together the large structure and it looks very impressive!

The **Lincoln, NE**, prefab team has been building Hilti cable tray racks at a mission critical facility. The racks measure around 13 feet tall

and must be moved with a telehandler.

The prefab shop in **Omaha, NE**, has designed and built an attachment for a small hand forklift. This attachment allows workers to lift back panels in and out of cans, keeping their hands away from pinch points.

In **Salt Lake City, UT**, at Rydalch Electric, Inc., some of our main jobs are roughing in with standard boxes and P-rings that have been assembled in Prefabrication. All conduit that is two inches or larger is being bent by Prefab. The field operations have been utilizing the online Prefab Order Form and the shop has been achieving 100%



**Motor starter racks from Des Moines.**

of the product to the field in less than a week.

In **Tucson, AZ**, a new prefab warehouse building was completed at the end of 2024.

---

---

## **Committed to Excellence**

**CUSTOMERS | EMPLOYEES | CHARACTER | MASTERY**



### **SUBSCRIBE TO OUR EMAIL NEWSLETTER**

Be the first to hear the latest and greatest from Commonwealth! We will never share your information and only send one email per quarter filled with great content.

**FOLLOW US**

